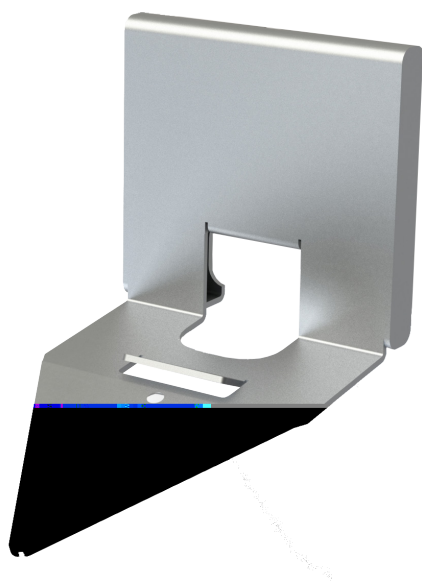


# Shield<sup>®</sup>

COMPACT

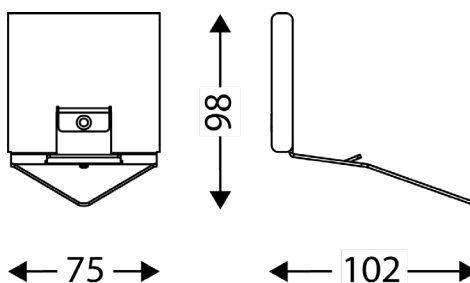
REF. 2 90 3068

## WALL MOUNTED SUPPORT



## ADVANTAGES

- Designed by RF Studio in harmony with the Shield Compact
- Eco-design and made in France
- Stainless steel
- Anti-theft retention and security to be used in all public places



DESIGNED BY RF Studio